

# SWITCHportfolio

The National E-Portfolio Service



# SWITCH

Urs Schmid  
[urs.schmid@switch.ch](mailto:urs.schmid@switch.ch)

Zurich, Nov-20<sup>th</sup>, 2015

Services → Video Portal

## SWITCHtube: publish and share videos

SWITCHtube is a playback platform for all videos and the new video portal for the Swiss academic community. Together with SWITCHcast, SWITCHtube is part of SWITCH's video management system. All files are stored securely on the Swiss academic network.

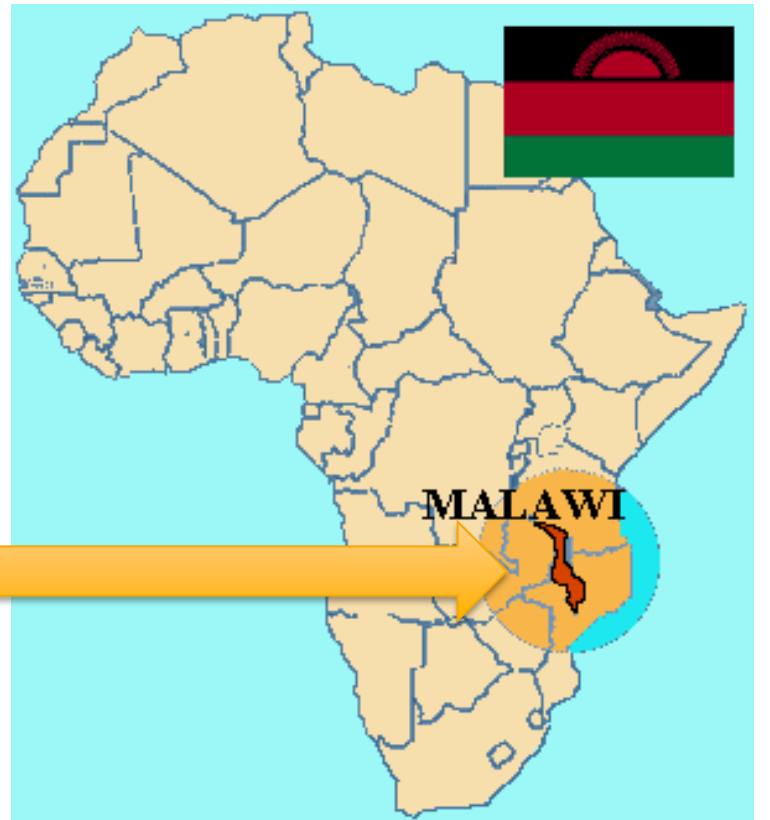
Academics are increasingly making and using their own videos. SWITCH already offers a service for recording videos: [SWITCHcast](#). The new video portal SWITCHtube serves as a central archive for videos universities have produced themselves or bought in as well as a playback platform that always delivers content in a format that works on the viewer's device.

SWITCHtube allows every university to provide its members with a dedicated video portal featuring any number of subject-specific channels. Depending on their intended purpose, videos can be shared with a small group, all members of your university, everyone with an AAI login or even the general public. The portal only shows users videos intended specifically for them. You can use the simple, uncluttered SWITCHtube user interface to watch, upload and share videos and to attach additional documents to them. Videos can be uploaded from any recording source.

### Contact



**Urs Schmid**  
Service Owner  
+41 44 268 15 52





# portfolio.switch.ch / Access & Security





# SWITCHportfolio



Dashboard Content Portfolio Groups Administration

Search

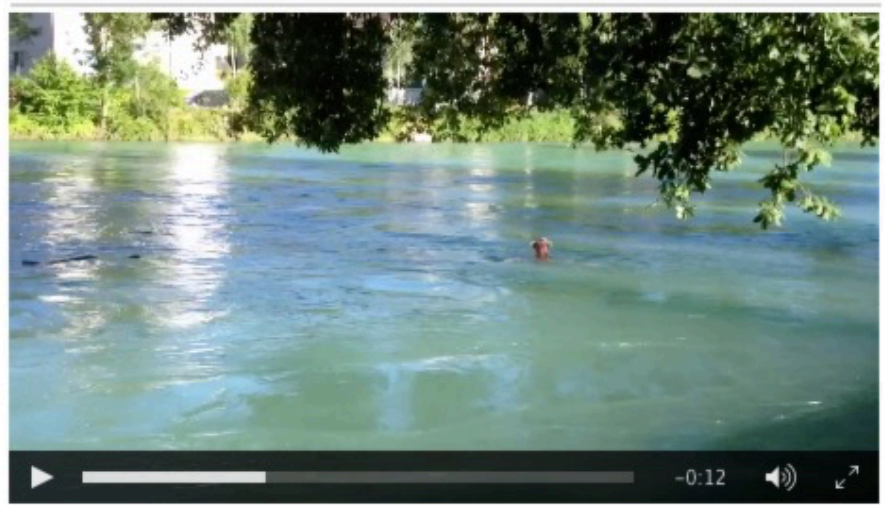
## Famous rivers you can swim in

Edit

by [Flussschwimmer](#)

I have been swimming in these rivers...

### Aare at Berne

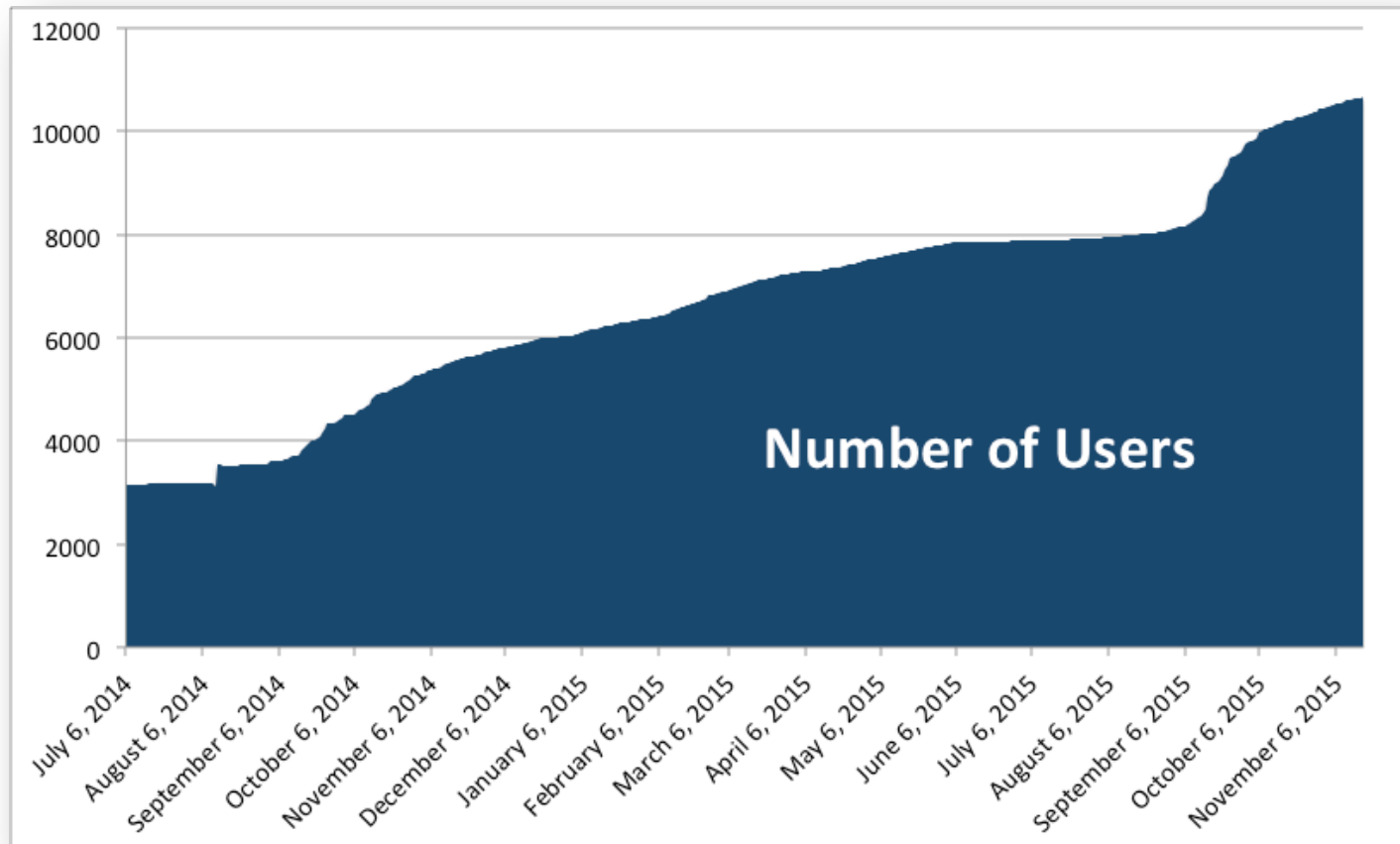


### Rhein at Schaffhausen



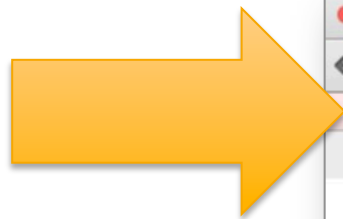
# Overview of SWITCHportfolio as of today:

- Mahara version 15.04.4 (update was 1 month ago)
- more than 1300 groups, more than 50'000 pages
- Average user has 22MB disk space (of 1 GB disk quota) and 5 pages
- Subscribed by 6 institutions: BFH, PHBern, FHNW, FHO, PHSG, HES-SO
- Currently about 10'500 active users



# Roadmap of SWITCHportfolio

- Contribute to the mahara community (wishlist, buglist, feature request)
- Install the responsive design to all institutions
- Provide an easy to use solution to migrate a portfolio from an institution account to an Alumni account (switch to Swiss edu-ID mandatory)
- Increase the data-security and the overall up-time to 100%



The screenshot shows a web browser window with the title 'Home - SWITCHportfolio'. The address bar displays 'SWITCH [CH] https://portfolio.switch.ch'. A pink banner at the top of the page reads: 'The site is temporarily closed for a database upgrade. Site administrators may log in.' Below this, the 'SWITCHportfolio' logo is displayed. A red 'Please note:' section follows, containing the following text: 'SWITCHportfolio will be down for maintenance on', '- Wednesday morning, Nov.18th from 7:30am to 8:00am', '- Thursday morning, Nov.19th from 7:30am to 8:30am', 'We will try to keep the shutdown of the service as short as possible.', and 'We apologize for any inconvenience caused thereby.'



# Questions?



# Thank you for your attention!

[urs.schmid@switch.ch](mailto:urs.schmid@switch.ch)  
[www.switch.ch/portfolio](http://www.switch.ch/portfolio)

