

SWITCH edu-ID

The long-term academic identity



SWITCH

Petra Kauer-Ott

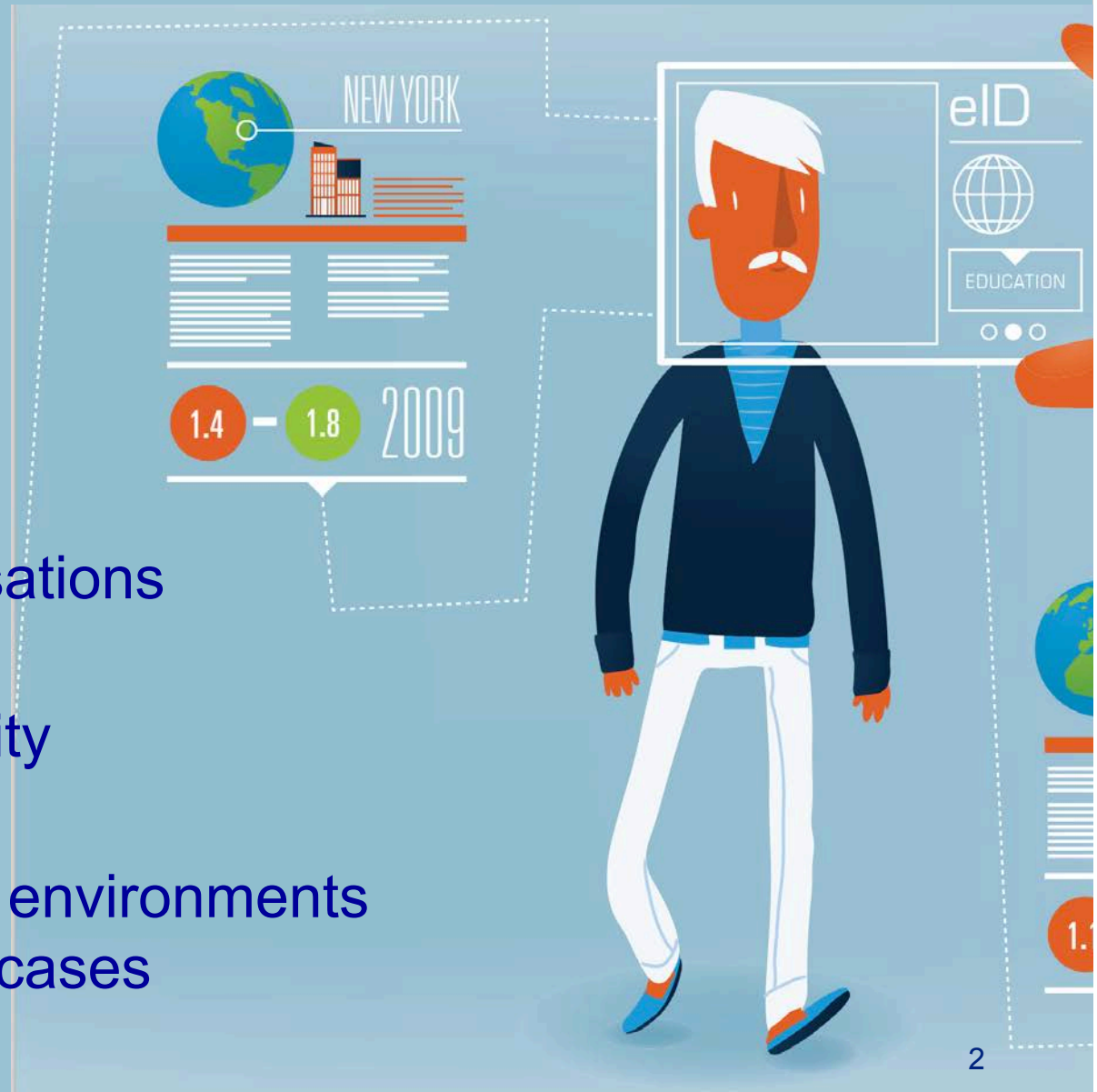
eduid@switch.ch

<http://projects.switch.ch/eduid/>

Lugano, 10.2.2017

The new academic identity is ...

- persistent
- user-centric
- open
- backed by organisations
- with scalable quality
- supporting mobile environments and non-web use cases



Does it affect me?

- Majority of users & services: not yet
- SWITCH cloud service users: soon
- Students: some of them soon (registration pilots)

→ latest when your university is migrating

for your authentication
(replaces AAI & can also be used with e-Assessment tools)

Benefit for the User

- **Long-living identity**
similar to social identities, secure & reusable
- **Control over data**
self-registration, verification, changes
- **Transparency**
changes, quality, exchange of data
- **Access**
to all resources in the academic context

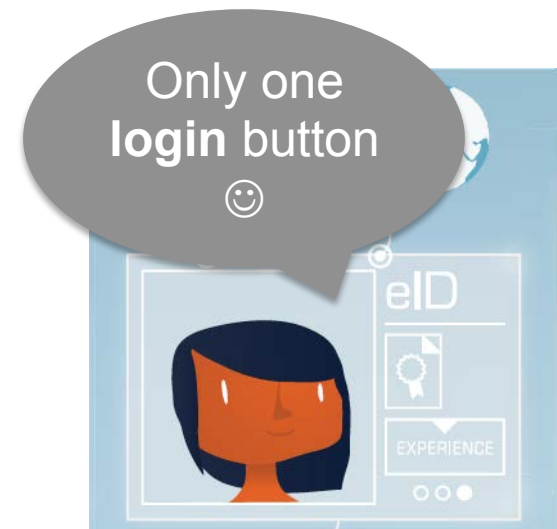


Benefit for the User

- **Long-living identity**
similar to social identities, secure & reusable
- **Control over data**
self-registration, verification, changes
- **Transparency**
changes, quality, exchange of data
- **Access**
to all resources in the academic context

... or perhaps I don't (too much information)

I want to see who gets my data ...



Benefit for the Service Provider

- **Security**

well established base (AAI), controlled policies, known and controlled quality of attributes

- **Unified solution**

compatibel with SWITCHaai, less administration, self-registration support, access based on attributes or roles, currentness of data, improved processes



Benefit for the Service Provider

- **Security**

well established base (AAI), controlled policies, known and controlled quality of attributes

- **Unified solution**

compatible with SWITCHaai, less administrative registration support, access based on attributes, currentness of data, improved processes

Could this other service be enabled too ?

Right time to improve things ?

Oh nice – it just works for my service



Benefit for the Organisation

- **One identity for all**
for members, guests, partners etc.
- **Compatibility**
standardized swiss-wide solution, international compatible
- **Data quality**
quality and currentness of data is visible, quality can be increased
- **Sustainability**
maintenance by SWITCH, architecture allows future extensions



Benefit for the Organisation

- **One identity for all**
for members, guests, partners etc.
- **Compatibility**
standardized swiss-wide solution, international
- **Data quality**
quality and currentness of data is visible, quality increased
- **Sustainability**
maintenance by SWITCH, architecture allows future extensions

How much effort is this ?

Where is the benefit for us ?



Service SWITCH edu-ID

Deployment of service starts in 2017 (eduid.ch)

Availability:

- for pilot services since 2015
- for SWITCHdrive/engines in late spring
- for organisations in late summer (first will be SWITCH)

SWITCH

Help EN ▾

Access your SWITCH edu-ID Account

In order to review and modify your SWITCH edu-ID account, you must authenticate first.

Authentication

E-mail Address

Password

[Create account](#) [Lost password?](#)

National Licenses Pilot

www.nationallicences.ch/registration

Access for private users
available since December 2016 via Swissbib

Needs verification of

- mobile phone number
and/or
- home address



Help EN ▾

Swissbib & Schweizer Nationallizenzen

To use Swissbib and access Swiss National Licences content, you need to have a SWITCH edu-ID account.

Create a SWITCH edu-ID account

Please complete the following form to create a new SWITCH edu-ID account.

Personal Data

First Name

John

Last Name

Doe

Registration Pilots

- FHNW (ready)
- ZHAW (starts in summer)
- ZHdK (starts in autumn)

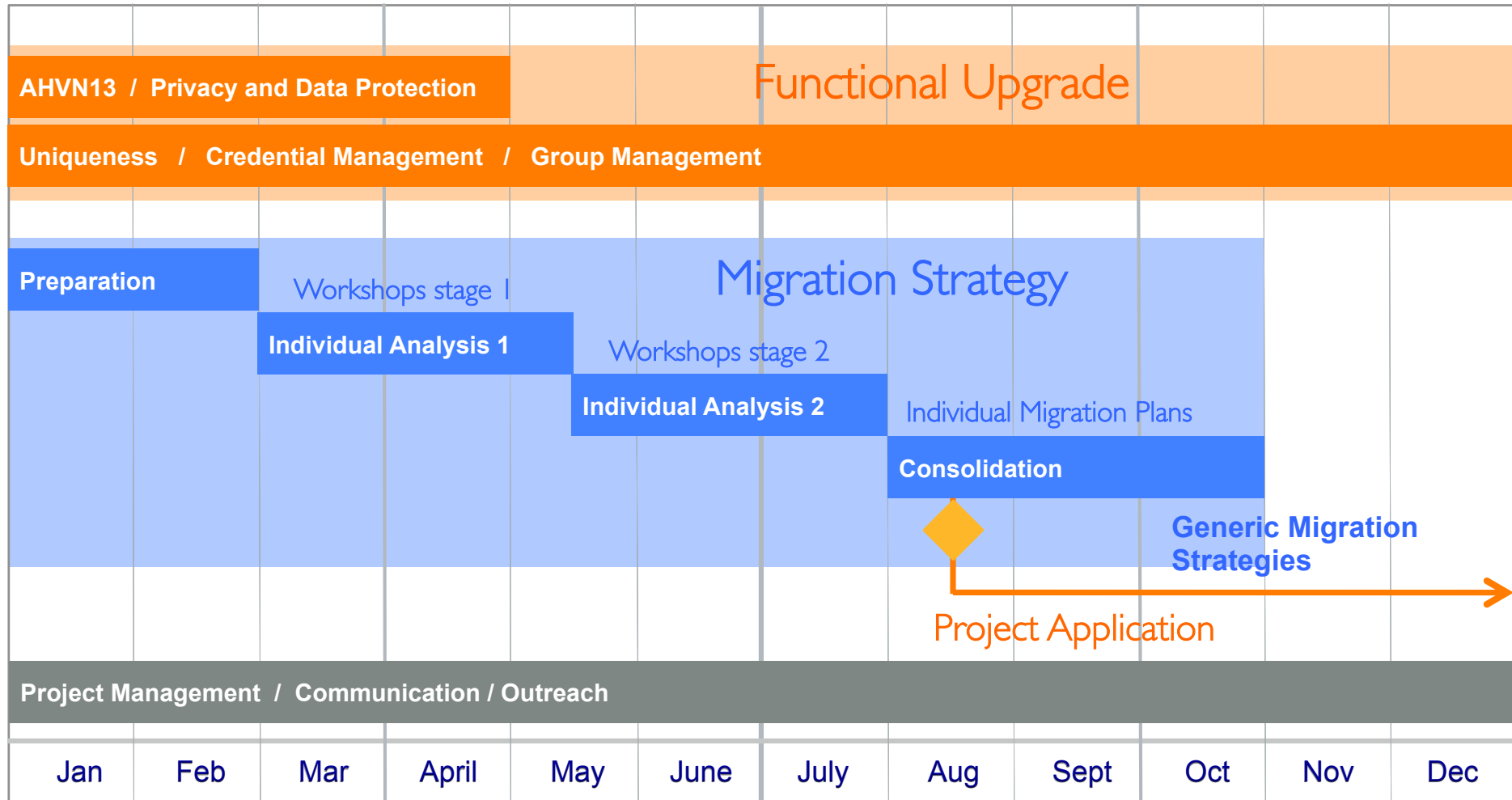
The screenshot shows the 'Student Registration' page for FHNW. At the top left is the 'n|w' logo for the University of Applied Sciences and Arts Northwestern Switzerland. At the top right is a language selector 'EN'. The main heading is 'Student Registration' under the sub-heading 'Use your Swiss edu-ID for accessing'. Below this is a 'Swiss edu-ID' section with two input fields: 'Email' containing 'yves' and 'Password' containing seven dots. A 'Login' button is positioned below the password field. Below the login button are two links: 'Create account' and 'Lost password?'. At the bottom of the form area are four links: 'My edu-ID', 'About', 'Help', and 'Terms of Use'. A note at the bottom of the form area states: 'For registration at FHNW you need a Swiss edu-ID account. If you don't have one already, please create it now.' The footer contains the 'SWITCH' logo on the right, and 'Legal Notice / Imprint' on the left, and '© 2016 for content at SWITCH' on the right.

The early birds ...



1. Work on their migration strategy
2. Show other birds how to “catch the worm”

2017 – Deployment Step 1



The early birds are...

EPFL

Contact: Pierre Mellier

Interest:

- integration at minimal cost, with no disruption
- rights management for external users
- data privacy



The early birds are...

FHNW



University of Applied Sciences and Arts
Northwestern Switzerland

Contact: Michael Hausherr

Interest:

- improve the overall system in the long run
- enable authentication for all resources & devices
- strengthening with additional identifiers
- improve duplicate-checking
- end-user acceptance
- keep in touch with Alumni

The early birds are...

UNIFR



UNIVERSITÉ DE FRIBOURG
UNIVERSITÄT FREIBURG

Contact: Jacques Tissot

Interest:

- short-term accounts & registration process
- link with the campus card
- support of virtual organisations
- keep in contact with Alumni

The early birds are...

UNIGE



UNIVERSITÉ
DE GENÈVE

Contact: Pierre-Yves Burgi

Interest:

- unify AAI-enabled systems
- use with new services for students (e-portfolio, collaborative services, mobile applications)
- registration at relatively low costs

The early birds are...

UNIL

Unil
UNIL | Université de Lausanne

Contact: Alexandre Roy / Christopher Greiner

Interest:

- generalize local group management
- leverage registration of private email address or mobile phone number
- registration process
- use information in internal workflows

The early birds are...

UNISG



University of St.Gallen

Contact: Simon Frigg

Interest:

- Input for further IdM activities (renew system)
- keep in touch with Alumni

The early birds are...

ZHAW

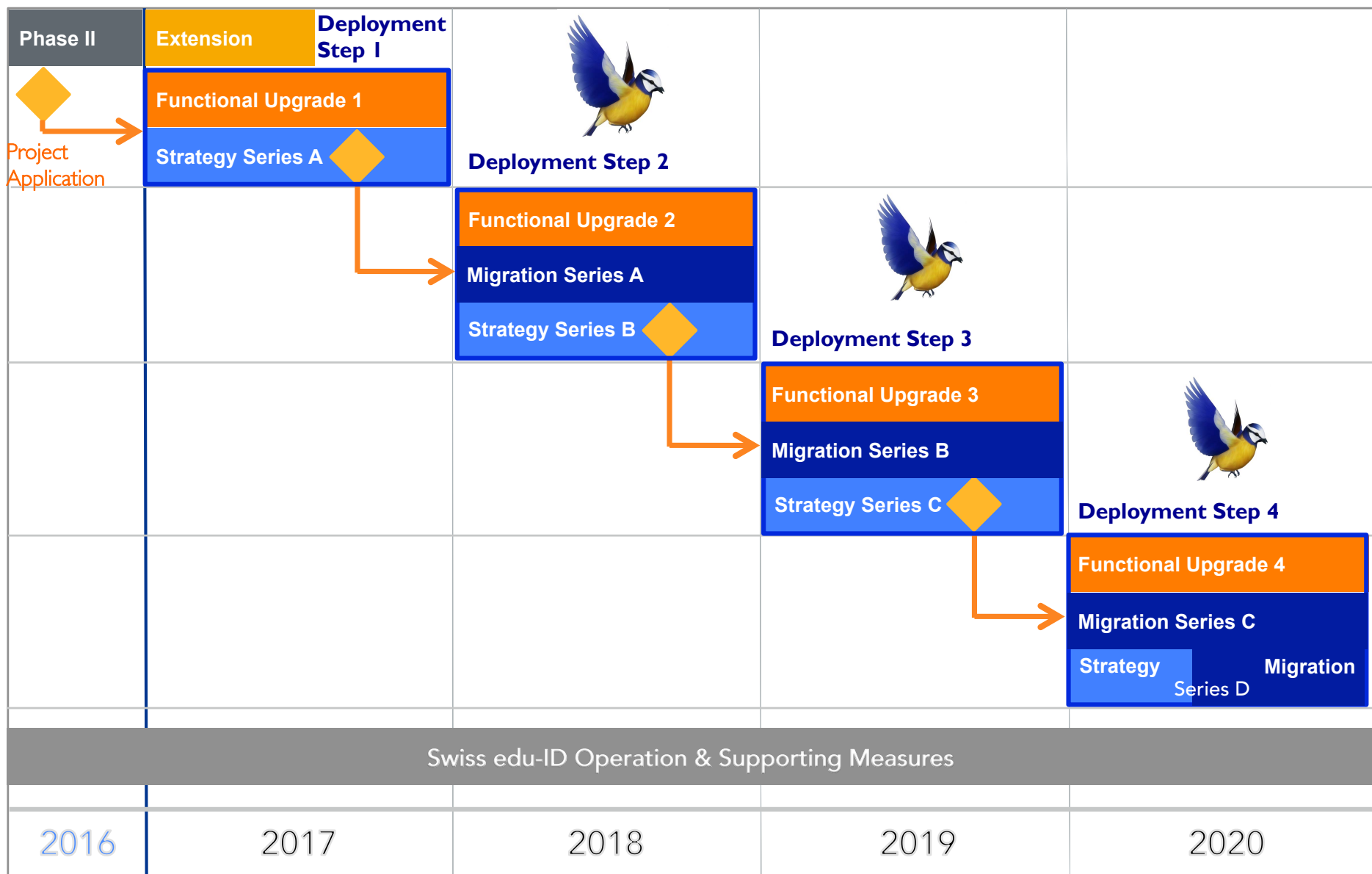
The logo for ZHAW, consisting of the lowercase letters 'zh' stacked above 'aw' in white on a blue square background.

Contact: Nisanth Muthukirushnasamy

Interest:

- evaluate impact on users and processes
- organisation specific benefits
(usability, performance, management of overlapping roles)
- coverage of the overall life-cycle
- efficiency
(business processes & IT-infrastructure)

Swiss edu-ID Deployment 2017 - 2020



We are not alone – other initiatives

- Federal eID: stopped
- **Other federal projects:** eGovernment related (IAM Bund, IDV Schweiz)
- **SwissPass:** sector-specific
- **New SuisseID:** on the way, quite similar approach !

- **Educa:** will probably choose to start with a distributed infrastructure (as SWITCHaai)

- **eduKEEP:** promote the Swiss edu-ID concept internationally



Blog: identityblog.switch.ch

Newsletter: eduid.ch

Website: eduid.ch

Stories: switch.ch/stories/
SWITCH Journal

Event: Workshops 2017

Update June 29 2017

