



# MaharaHui 2017

Auckland, April 5 - 7, 2017

# SWITCH

Nathalie Roth

[nathalie.roth@switch.ch](mailto:nathalie.roth@switch.ch)

Zurich, May 29, 2017



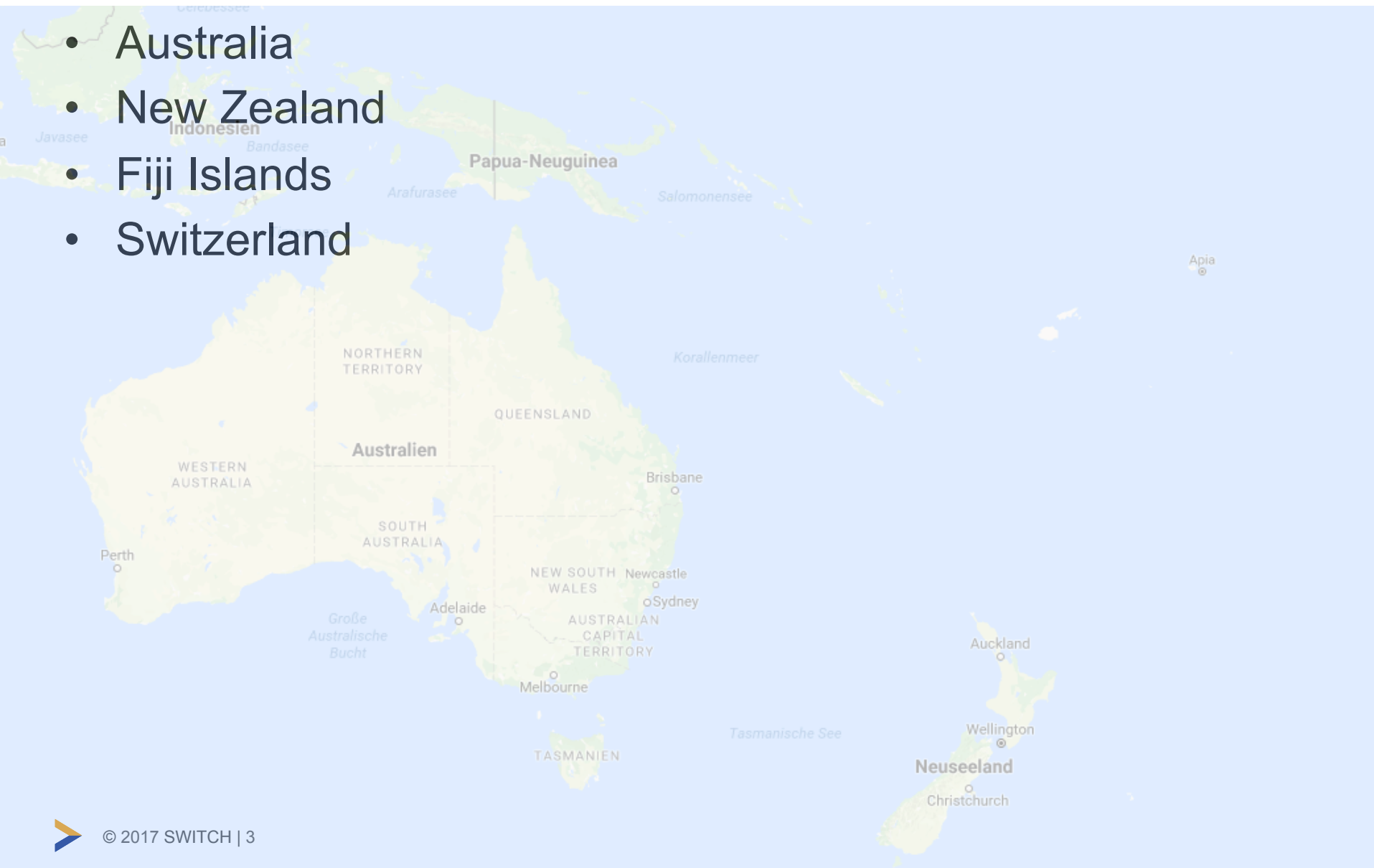
# MaharaHui 2017

- Auckland University of Technology, NZ
- April 5 - 7, 2017



# Participants

- Australia
- New Zealand
- Fiji Islands
- Switzerland



# Topics

- New features of mahara 17.04
- SmartEvidence
- Scenarios with e-portfolios
- Challenges & best practices
- How tos

# Mahara 2017: What's new?

- New logo & rebranded website
- New default theme in Mahara
- New navigation (menu top right)
- Pages & collections now combined
- Better visibility of access permissions
- Easy access to managing collections

# More new features...

- Single sign-on
- Web conferencing (Blue Button)

<http://master-mahara.catalystdemo.net.nz/>

# SmartEvidence

- SmartEvidence = visual overview of competencies
- JSON editor online

<http://www.jsoneditoronline.org/>

# Challenges

E-portfolio usage at University of Canberra:

- How do we get people to use it?
- How do we support the use of it?



# Some solutions

- Support site
- Ticketing system
- Drop in support
- Workshops on request

How tos:

<https://learnonline.canberra.edu.au/portfolio/view/view.php?t=0D2tx5nZzMglmef1wYNp>

# Wishlist

- More collaboration
- Better LMS integration
- More assessment options (e.g. rubrics)
- Better mobile device support

