



One year chair of the Moodle Users Association
– insights and thoughts

What do we do ?

1 Improve UI/UX Student Activity Completion - 3.11

Problem:

- What are the requirements for students to complete each activity.
- What are the important dates for a specific activity.

<https://tracker.moodle.org/browse/MDL-70469>



Look and feel...

Automatic completion

Immerse yourself in permaculture for an intensive living, learning experience with Fleetwood School for our PDC. Gain the knowledge and skills to design your property, build resilient community and bring practical sustainability into your personal life, profession and workplace.



Assignment activity

Submissions open: Friday, 1 April 2021 17:00

Submissions close: Wednesday, 14 April 2021 17:00

To do: Make a submission



Assignment activity

Submissions open: Friday, 1 April 2021 17:00

Submissions close: Wednesday, 14 April 2021 17:00

Done: Make a submission

Previous projects

- Pre 3.5 Recycle bin, New Course Overview Block in Dashboard
- Moodle 3.5 Expanded question bank
- Moodle 3.6 Fix analytical tools for random quiz questions
- Moodle 3.7 Course overview (implemented in 3.6 with HQ)
- Moodle 3.8 Advanced Forum
- Moodle 3.9 Course copy & Participants filter
- Moodle 3.10 Download all functions
- to be Moodle 4.0 make Atto Editor more accessible

Core projects that would have been too difficult for a single institution to code.

What exactly are we



**MUA is a non-profit organization,
independent of Moodle HQ and Moodle partners.**

What is MUA?

- The MUA is run by a committee (<https://moodleassociation.org/committee/>):
 - Elected
 - Volunteer
 - Committed to the user base
- The MUA has a statute and processes:
 - www.moodleassociation.org/rules



Distribution of MUA members

- MUA currently has **members** all around the world:
in Africa, America, Asia, Europe, and Oceania.
- Current **committee** members are from Canada, the USA, Germany, Portugal, Switzerland, Ireland, and Japan.

Insights

...after 3 years in the committee and 1 year as chair

Insights.

- Community rocks!
 - but takes time!
- The connection to HQ is a valuable benefit!
 - but they put their pants on one leg at a time too!
- Leading a world wide organisation is a fulfilling job!
 - but the volunteering structure is challenging!

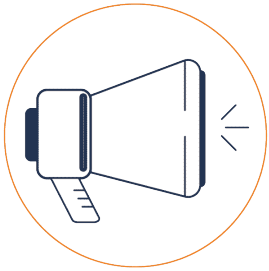
Insights..

- Made projects possible, which weren't even imaginable...
 - SEB Deeper integration, Quiz 4.0
- Non-for-profit is a challenging field
 - convincing people to do „a good thing“
- Learning is diverse and challenges in teaching too
 - especially when it comes to other continents and cultures
- Growing is important (project size and influence)
 - but very difficult

Membership



Why become a member?



**Join the
conversation**



**Joint
funding**



Connect



**Make an
Impact**



**Early
Insights**

What do members get?

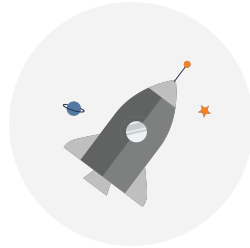
- Project proposal and voting rights in project cycles
- Monthly online Town Hall meetings with exclusive presentations from and direct discussions with Moodle HQ.
- Candidate rights and voting rights for Committee selection.
- Visibility worldwide.
- One badge per member per year.

What does the membership cost?

Individual
member



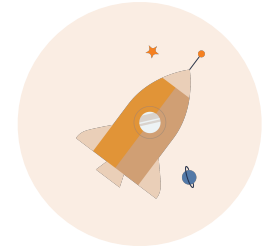
Silver
member



bronze
member



Gold
member



----- organisational member -----

65 CHF/y ----- 6500 CHF/y

Switzerland - 8 organisational member (+ individuals)

| | | | |
|--|---------------|------|-------------|
| HSR Hochschule für Technik Rapperswil www.hsr.ch | Silver member | 2017 | Switzerland |
| Fachhochschule Nordwestschweiz https://www.fhnw.ch/ | Silver member | 2020 | Switzerland |
| ETH Zürich, Educational Development and Technology http://www.let.ethz.ch | Silver member | 2016 | Switzerland |
| University of Fribourg https://www.unifr.ch | Bronze member | 2017 | Switzerland |
| ZHAW Zurich University of Applied Sciences https://www.zhaw.ch | Silver member | 2016 | Switzerland |
| BFH Bern University of Applied Sciences https://www.bfh.ch | Silver member | 2017 | Switzerland |
| Swiss Distance University of Applied Sciences (Swiss Distance UAS) www.ffhs.ch | Bronze member | 2019 | Switzerland |
| Università della Svizzera italiana http://www.usi.ch | Bronze member | 2018 | Switzerland |

Thoughts

...as a representative of an University (and as individual)

Thoughts.

- Institutional membership is for ETH a no-brainer (ROI).
- Committee member means investment in time, but gives back more
- Ideal field for personal development, incl. language skill & cross-cultural communication
- Worth investing? Yes, with no hesitation!

Questions.

The MUA increases our impact with every single member. Only a strong voice and project capacity gives us the chance to be heard as Universities, as Europeans, as Education professionals

- What would be the one thing, we should focus on for you?
- What prevents your institution from joining? What would help you join?



Thank you!

Web

www.moodleassociation.org

Mail

info@moodleassociation.org

Twitter

[@moodleassoc](https://twitter.com/moodleassoc)